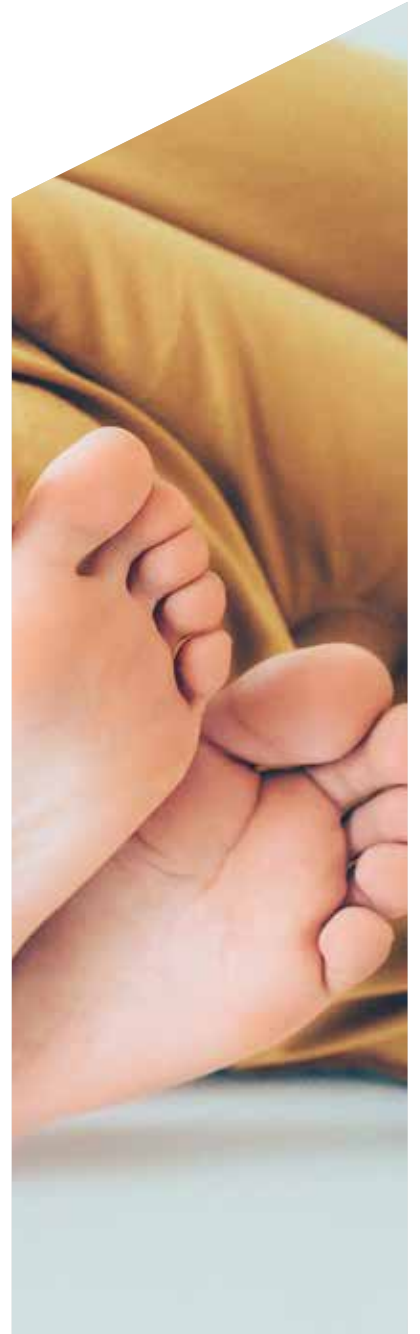


MORE THAN A DOOR





Our doors are chosen by homeowners who appreciate exceptional craftsmanship, timeless elegance and built-to-last quality. They quickly discover that all this good stuff means plenty more.

**A quieter, warmer and stylish home.
A more relaxed, peaceful and secure life.**



CONTENTS

06-11	Energy efficiency benefits
12-19	Security features
20-27	Colour choices

TRADITIONAL DOORS

30-55	Traditional Collection
46-50	Accessible Doors
52-53	Stable Doors
54-55	French Doors
56-59	Rose Gold Collection

CONTEMPORARY DOORS

60-73	Contemporary Collection
74-81	Silka Collection
82-87	Modo Collection
88-89	Coloro Collection

ACCESSORIES

90-109	Door Furniture Styles
110	Threshold Options
111	Backing Glass Options

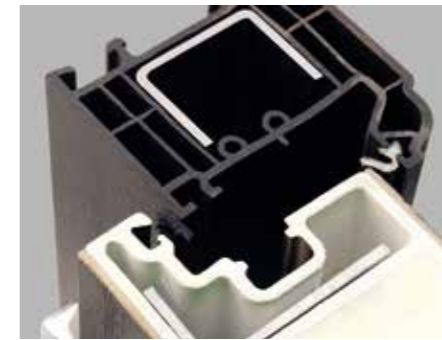


Quiet storms and cosy toes.

Close our doors and the world outside disappears. Triple glazing keeps the noise down, while virtually airtight seals keep the heat in. No thrum from lashing rain or whistling, swirling wind. Door closed. Coat off. Now you're home.

Our doors are at their best when the weather is at its worst.

For all you know, it could be blowing a gale outside, lashing rain or hailstones. Maybe all three at once. But you can't hear the wind's howl or feel the temperature drop. That's because you have an Apeer front door. Triple glazed, double rebated and twice the thickness of most others, it effortlessly keeps mother nature's wildest tantrums at bay.



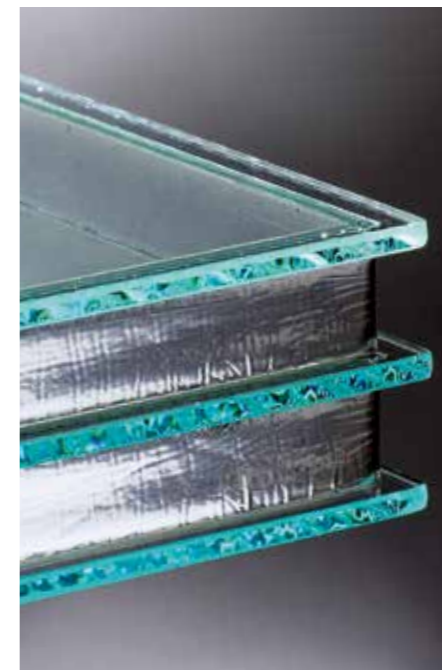
VIRTUALLY AIRTIGHT

Our double sealed rebate is virtually airtight by creating an internal secondary seal.



EXTRA INSULATION

Along with our 70mm super-strong, highly insulating polyurethane core, glass elements are triple glazed for extra insulation. We can even gas-fill them for improved thermal performance.



Glazed units are also available with Low E glass and can be gas filled to offer improved thermal performance. *Low E glass is only available in clear.

A DECISION TO PLEASE BOTH HEAD AND HEART

Having one of the world's most energy efficient doors is a smart decision for wise heads. But it's the way it repels the blatter of rain and silences the wind's howl that warms the heart. Fingers and toes too.





Good for the planet.
Even better for your wallet.

Sealing heat in while keeping cold out, they are **A-Rated** by independent testers and far exceed the industry benchmark. By keeping more heat in your home, you'll keep more cash in your wallet.





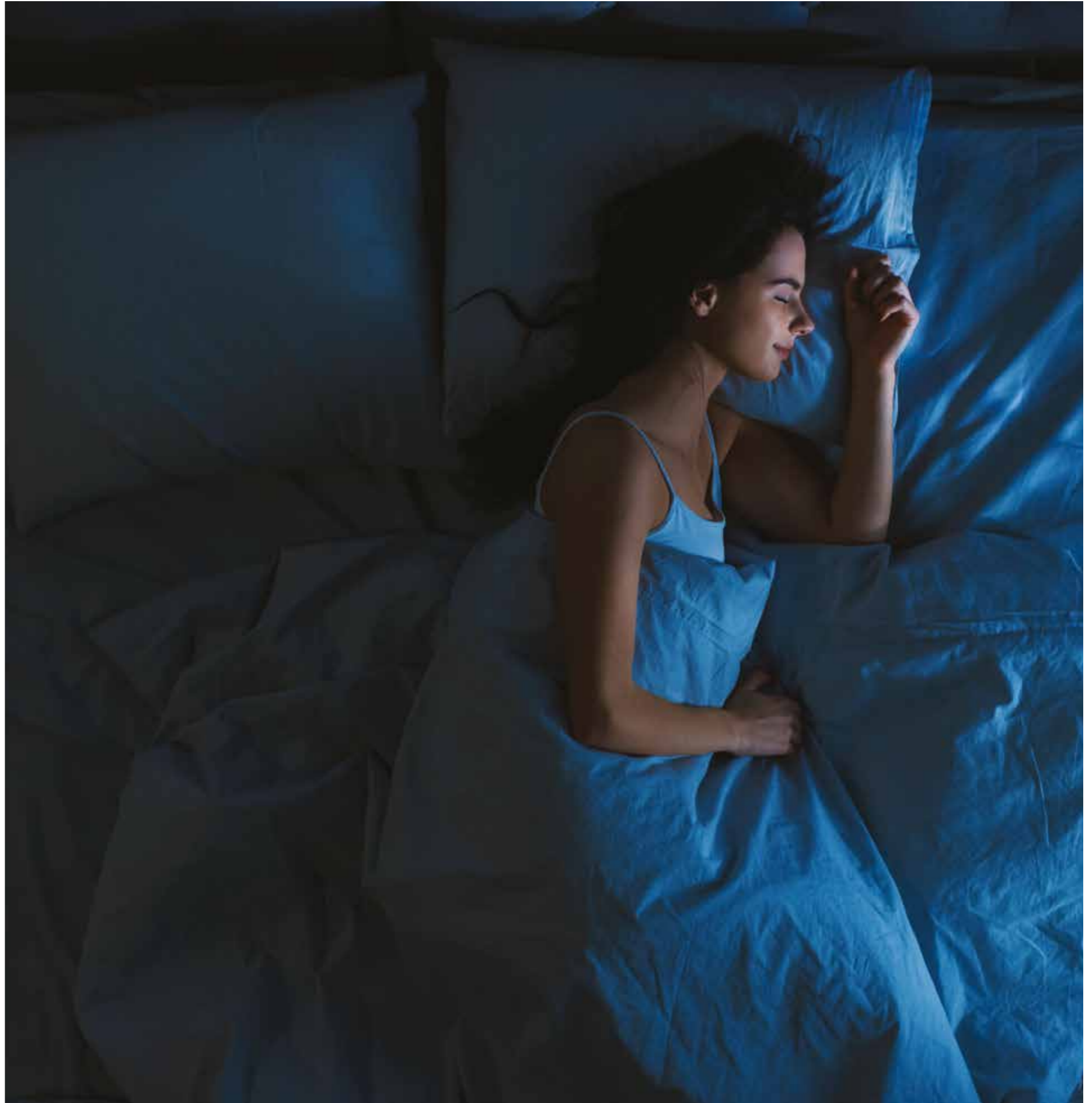
You're in safe hands.

We've thought of everything that can go wrong with your door. Then made sure it won't. From police-approved locks to rhino-resistant frames, you're in safe hands.

A great night's sleep.

Rest easy - our doors are as secure as they come. Good to know, whether you're tucked up at home or away for the night.

Every Apeer door comes with a multi-point locking system as well as a super-strong, highly insulating polyurethane core that far exceeds all Police-approved security standards.



Strength from within.

Inside every Apeer 70mm door there's a super-strong steel and metal reinforcing that forms part of the highly insulating polyurethane core. And with a vertical steel bar running top to bottom along the inside edge, our doors far exceed Police-approved security standards.

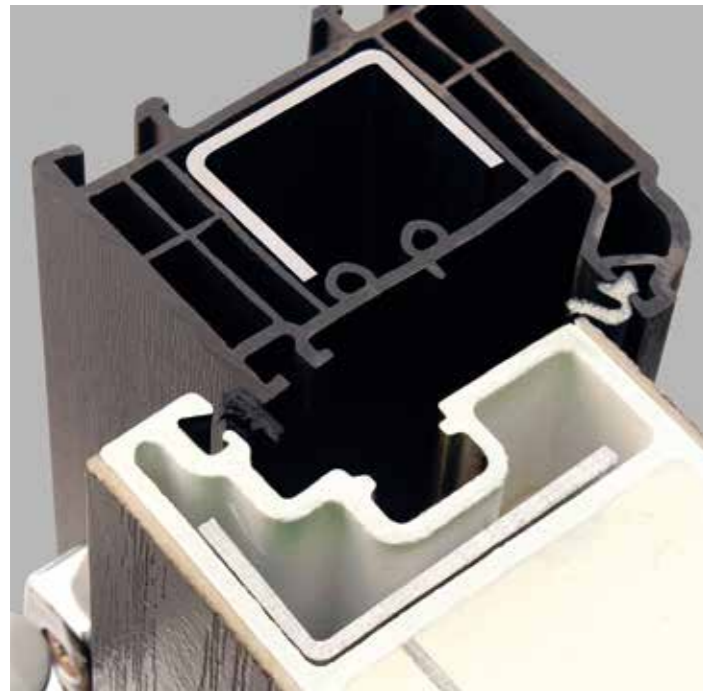


Extremely strong vertical steel reinforcing bar adds rigidity and security.



Super-strong, metal reinforced, highly insulating polyurethane core.





We've got your back.
And your front.

Install an Apeer door and you'll have the weight of our entire design team and security specialists protecting you and your home from intruders. Our doors comfortably exceed all industry standard impact and cut-through tests.

Secured by Design doors must be ordered with laminated glass.



Toughened, triple glazing housed in reinforced mouldings with the optional extra of laminate glass for optimum security.



Extremely strong vertical steel reinforcing bar in our doors adds rigidity and security.



A strong coupling bar adds strength and stability.



Multi-point Yale locking system features two rollers, three hooks, two deadbolts and a latch. It secures the door from top to bottom.



Hardened steel hinge bolts make it virtually impossible to force open our doors or lift them off their hinges.

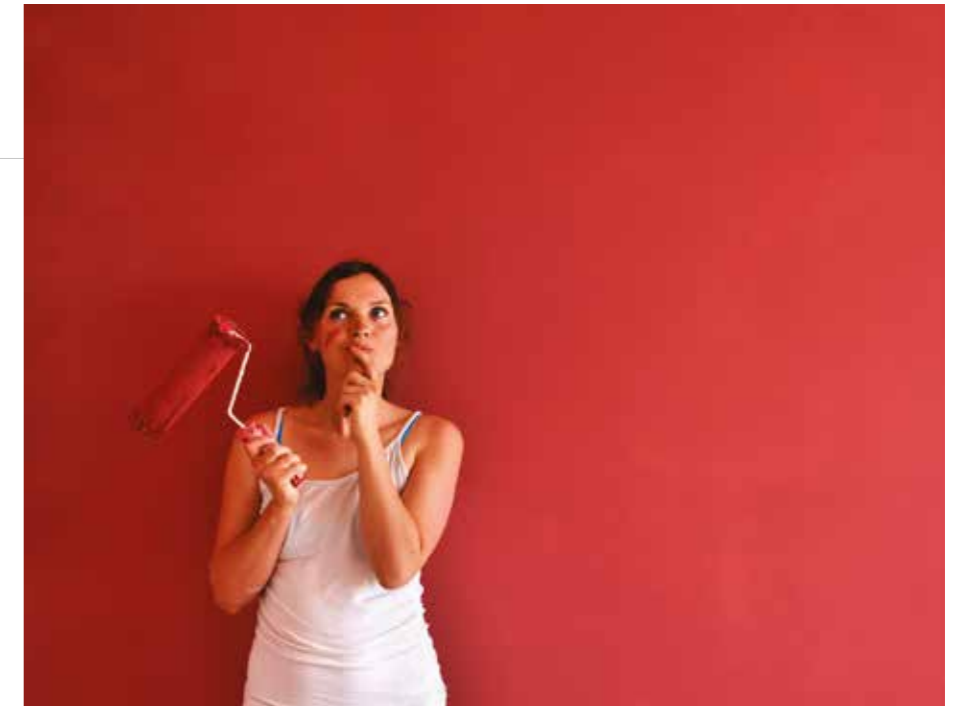
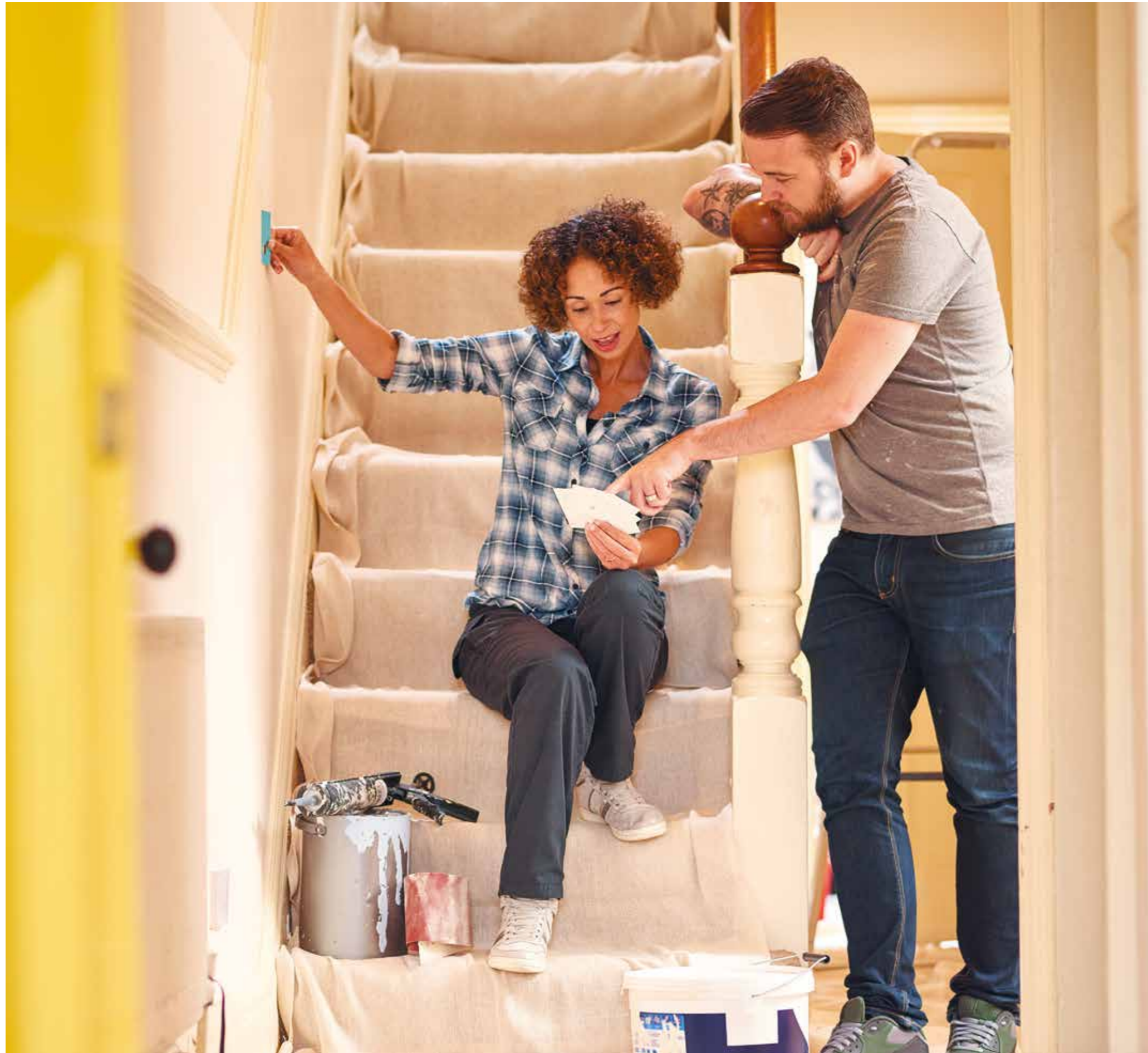


Ultimate Ultion Upgrade!

We also offer an optional upgrade to a high security 3* anti-snap Ultion Cylinder. Should a burglary take place within 5 years from the date of installation and entry was achieved by snapping an Ultion lock, **Ultion will pay you £2,000***.

*Activation required within 28 days of installation. Full T&C's apply.

In order to ensure the best quality accessories are used on Apeer doors, New World reserves the right to replace any of the above options as required. Hardware comes with manufacturer's warranty. Please note the high level automatic lock is not suitable for all users and we recommend you check with your supplier before final order sign off.



Doors with a unique personality and character: yours.

Your front door is the focal point of your home's façade. But it's more than just an entrance. It speaks to the world on your behalf. It reflects your personality and stands for the same things you do. If that's impeccable taste, craftsmanship and protecting your family from mother nature's tantrums you've come to the right place. And if it's also about standing out from the crowd, our standard colour choices or colour matching options are right up your street.

Perfectly yours.
You pick the colour, we match it.



Express your individuality with a virtually infinite combination of door styles, colours, glazing and accessories. If one of our 27 hues isn't exactly what you're looking for, our manufacturing process enables you to match your door to most colours. Simply bring along a RAL or BS colour reference and we'll match it.



LOVE ELEPHANTS?

We can colour match to your favourite animal - even if it's an elephant.

Metallic Colours are not available. There is an extra charge for Premium and RAL/BS colours. We may not be able to match all RAL/BS colours.

Check out our standard and premium colour palettes.

LOW MAINTENANCE

To keep your Apeer door looking great, gently wipe down your door with warm soapy water and a soft cloth.

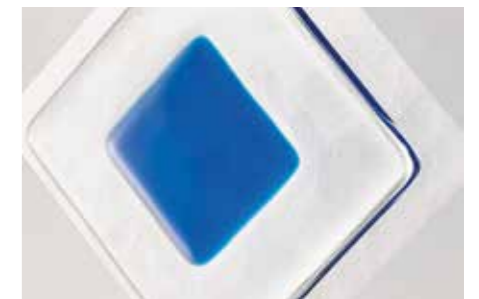
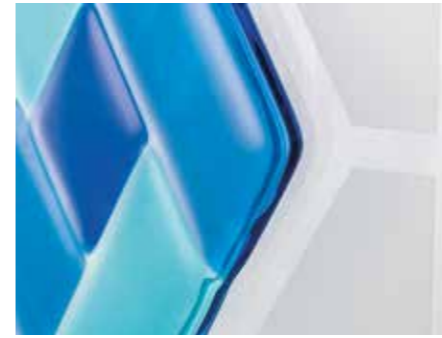
Metallic Colours are not available. There is an extra charge for Premium and RAL/BS colours. We may not be able to match all RAL/BS colours.

Agate Grey is part of our standard colour range.



Every effort has been made to reproduce the colour of our Apeer doors and the coloured film in the decorative glass designs. However, printing constraints will give rise to some colour deviation. For exact colour matching please request a colour sample from your approved supplier before purchase. Please note the grain on the GRP Apeer door does not replicate the grain on the frame as it is a PVC foil. The grain and colour on the Oak and Rosewood doors are not an exact match to the Oak and Rosewood PVC frames.

Add a personal touch with bespoke, handcrafted glass designs.



You've chosen the door style and picked a colour that perfectly complements your home. Now for the finishing touch: glass designed by you and handcrafted by our in-house artisan glaziers.

CLEARLY YOURS

Our in-house glaziers have pulled together some of their favourite, on-trend designs. They are available across our range and are an easy way to make it clear that it's more than just a door - it's a welcome new addition to your family.

Doors that sound as good as they look.

The solid 'thwump' when you close an Apeer door sounds like no other. It's a signal of its superior construction, reinforced frame and virtually airtight seals. 'Thwump' - it's short for great looks, safer homes and cosy nights in by the fire.



Apeer may come in two formats but the principles behind each remain the same. Whether you choose the 70mm thick double rebate seal, or the ingenuity of the 44mm thick single rebate seal, both perform exceptionally well in terms of energy efficiency, security and appearance.

*Cutout shows Apeer 70mm on left and Apeer 44mm on right. The door codes featured in the brochure refer to Apeer 70mm door range.

Apeer 70mm Door Construction:
70mm super-strong, highly insulating polyurethane core. High strength, expanded steel and metal reinforcing. Double rebate draft seal with GRP inner frame. Handmade, triple glazed decorative units. Double steel hinge bolts and lifelike grain.

Apeer 44mm Door Construction:
44mm super-strong, highly insulating polyurethane core. Double glazed Q seal warm edge super spacer system. Timber frame effect raised mouldings. Flush fit and lifelike grain.



TRADITIONAL COLLECTION

Elegantly timeless, the Apeer Traditional Collection is designed to enhance homes with traditional good looks.

Rowton

Door APM2, Glass BO508*
Shown in Black



Furniture Shown: Aspire Handle, Doctors Knocker and Architectural Push-in Letterplate all shown in Chrome. *Glass design shown with Minster backing glass.

Every effort has been made to reproduce the colour of our Apeer doors and the coloured film in the decorative glass designs. However, printing constraints will give rise to some colour deviation. All Apeer 70mm doors are triple glazed as standard. Please note the grain on the GRP Apeer door does not replicate the grain on the frames as it is a PVC foil. Sidelight and toplight designs will depend on sidelight and toplight final sizes and may vary from design shown. Coloured film in glass designs is not an exact match to the door colour.

Dunluce

Door APA1, Glass LO64*
Shown in Agate Grey



Furniture Shown: Architectural Handle, Heritage Bull Ring Knocker, Architectural Push-in Letterplate, Heritage Door Pull all shown in Satin Silver. *Glass design shown with Satin backing glass.

Every effort has been made to reproduce the colour of our Apeer doors and the coloured film in the decorative glass designs. However, printing constraints will give rise to some colour deviation. All Apeer 70mm doors are triple glazed as standard. Please note the grain on the GRP Apeer door does not replicate the grain on the frames as it is a PVC foil. Sidelight and toplight designs will depend on sidelight and toplight final sizes and may vary from design shown. Coloured film in glass designs is not an exact match to the door colour.

Portland

Door APL2, Glass BO510*
Shown in Porcelain Blue

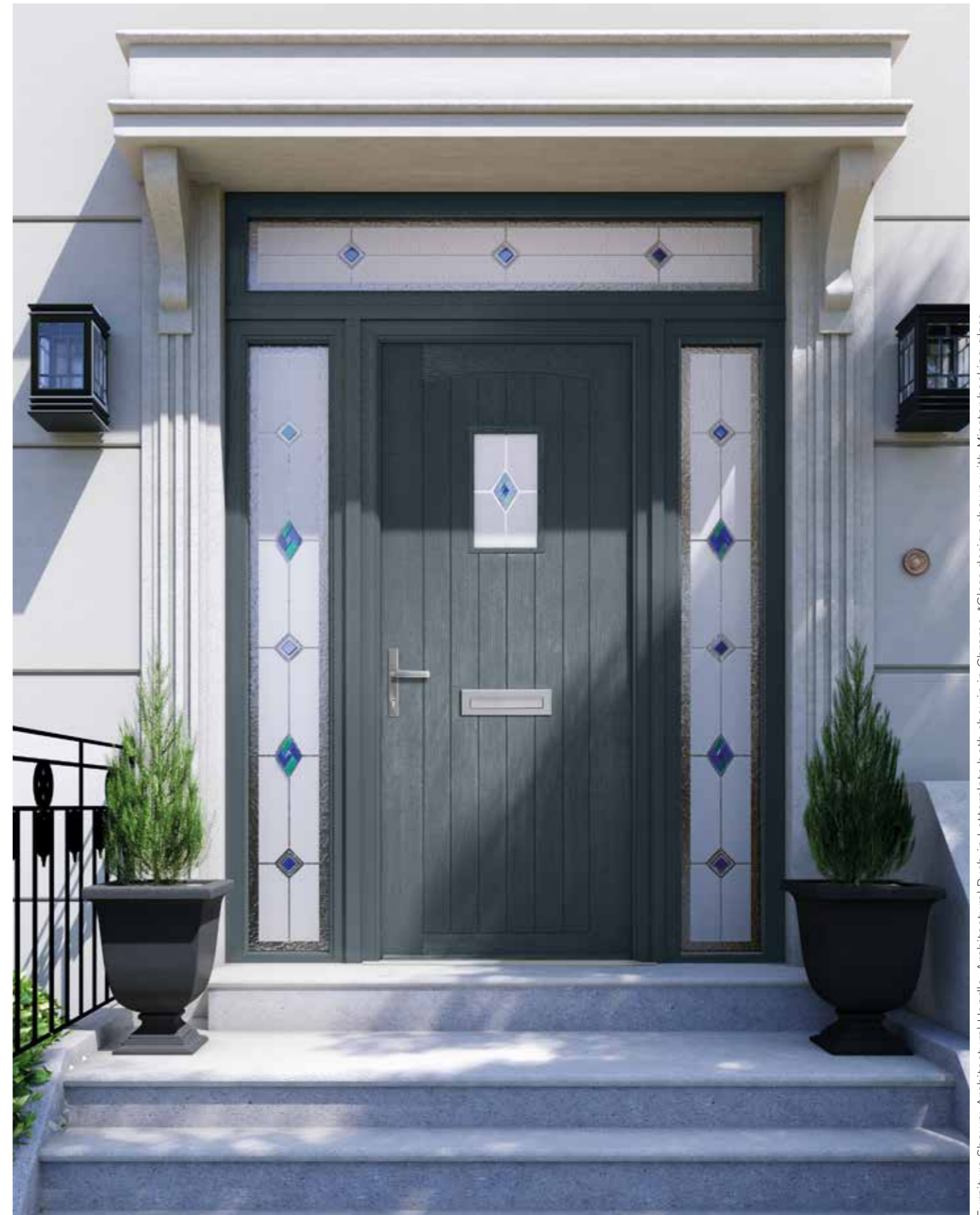


Furniture Shown: Forged Black Noble Handle, Forged Black Bull Ring Kicker, Forged Black Push-in Letterplate, Forged Black Door Pull. *Glass design shown with Minster backing glass.

Every effort has been made to reproduce the colour of our Apeer doors and the coloured film in the decorative glass designs. However, printing constraints will give rise to some colour deviation. All Apeer 70mm doors are triple glazed as standard. Please note the grain on the GRP Apeer door does not replicate the grain on the frames as it is a PVC foil. Sidelight and toplight designs will depend on sidelight and toplight final sizes and may vary from design shown. Coloured film in glass designs is not an exact match to the door colour.

Hanwell

Door APY2, Glass FT14*
Shown in Anthracite Grey



Furniture Shown: Architectural Handle, Architectural Push-in Letterplate both shown in Chrome. *Glass design shown with Minster backing glass.

Every effort has been made to reproduce the colour of our Apeer doors and the coloured film in the decorative glass designs. However, printing constraints will give rise to some colour deviation. All Apeer 70mm doors are triple glazed as standard. Please note the grain on the GRP Apeer door does not replicate the grain on the frames as it is a PVC foil. Sidelight and toplight designs will depend on sidelight and toplight final sizes and may vary from design shown. Coloured film in glass designs is not an exact match to the door colour.

Rowton

Door APM2, Glass BO508*
Shown in Anthracite Grey



Furniture Shown: Pewter Noble Handle, Pewter Bull Ring Knocker, Pewter Push-in Letterplate, Pewter Door Pull. *Glass design shown with Minster backing glass.

Every effort has been made to reproduce the colour of our Apeer doors and the coloured film in the decorative glass designs. However, printing constraints will give rise to some colour deviation. All Apeer 70mm doors are triple glazed as standard. Please note the grain on the GRP Apeer door does not replicate the grain on the frames as it is a PVC foil. Sidelight and toplight designs will depend on sidelight and toplight final sizes and may vary from design shown. Coloured film in glass designs is not an exact match to the door colour.

Portland

Door APL2, Glass LF515*
Shown in Black



Furniture Shown: Aspire Handle, Urn Knocker and Architectural Push-in Letterplate all shown in Chrome. *Glass design shown with Minster backing glass.

Lambton

Door APS2, Glass B07*
Shown in Rosewood



Furniture Shown: Gold Letterplate. *Glass design shown with Minster backing glass.

Every effort has been made to reproduce the colour of our Apeer doors and the coloured film in the decorative glass designs. However, printing constraints will give rise to some colour deviation. All Apeer 70mm doors are triple glazed as standard. Please note the grain on the GRP Apeer door does not replicate the grain on the frames as it is a PVC foil. Sidelight and toplight designs will depend on sidelight and toplight final sizes and may vary from design shown. Coloured film in glass designs is not an exact match to the door colour.

Dunluce

Door APA1, Glass FT35*
Shown in Black

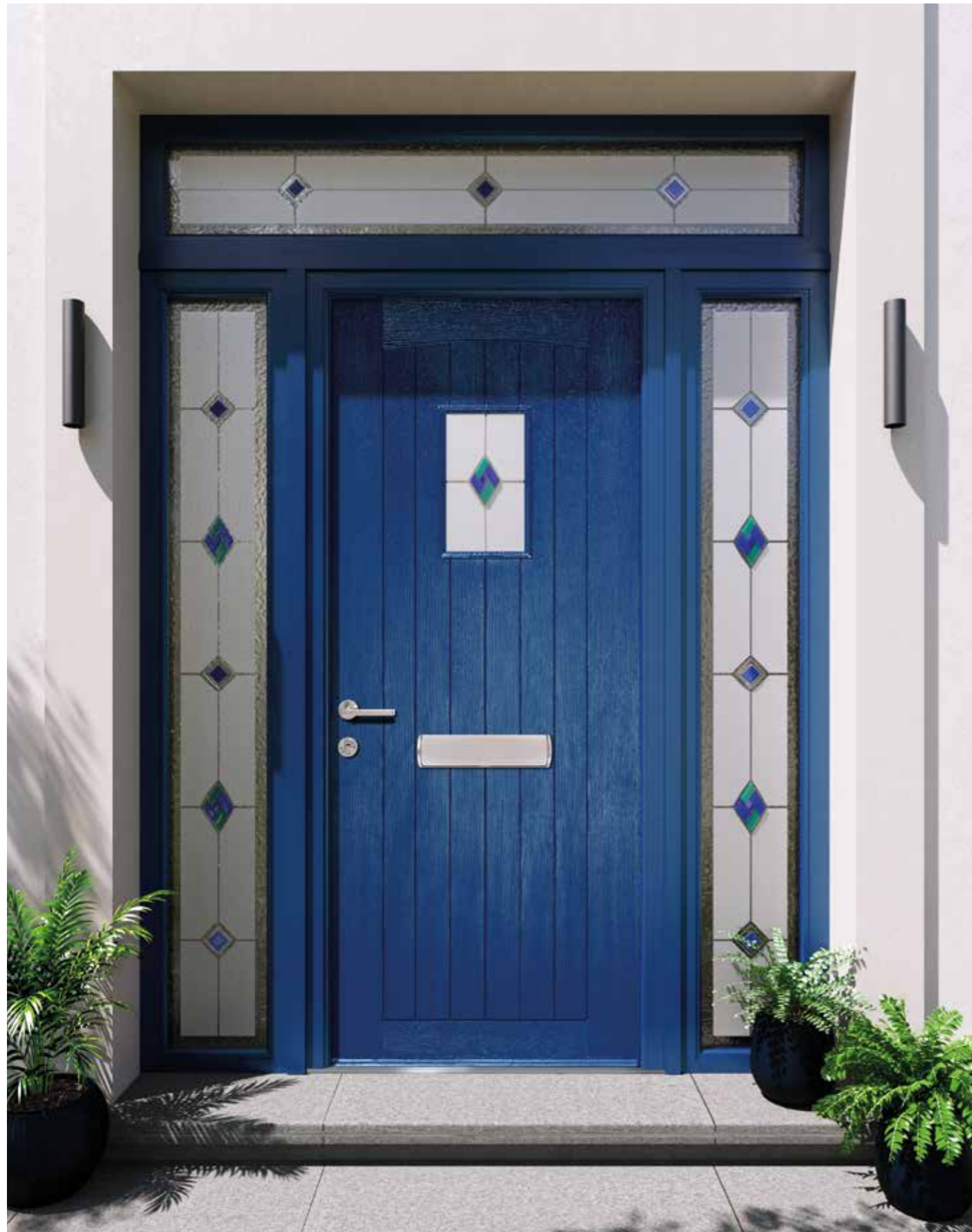


Furniture Shown: Aspire Handle, Limited Edition Bumble Bee Knocker, Architectural Push-in Letterplate all shown in Chrome. *Glass design shown with Minster backing glass.

Every effort has been made to reproduce the colour of our Apeer doors and the coloured film in the decorative glass designs. However, printing constraints will give rise to some colour deviation. All Apeer 70mm doors are triple glazed as standard. Please note the grain on the GRP Apeer door does not replicate the grain on the frames as it is a PVC foil. Sidelight and toplight designs will depend on sidelight and toplight final sizes and may vary from design shown. Coloured film in glass designs is not an exact match to the door colour.

Hanwell

Door APY2, Glass FT14*
Shown in Steel Blue

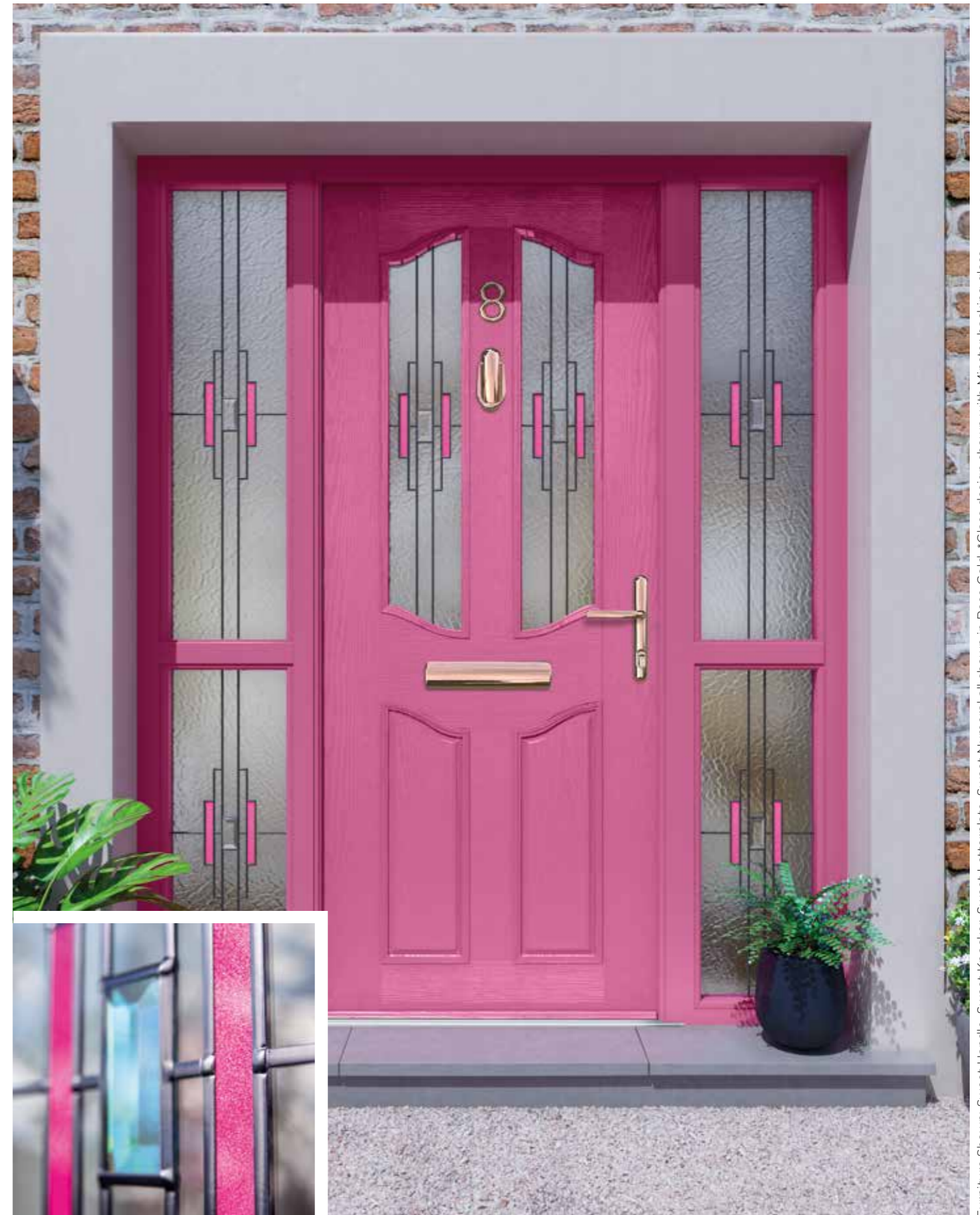


Furniture Shown: Karcher Stainless Steel Handle with Stainless Steel Letterplate. *Glass design shown with Minster backing glass.

Every effort has been made to reproduce the colour of our Apeer doors and the coloured film in the decorative glass designs. However, printing constraints will give rise to some colour deviation. All Apeer 70mm doors are triple glazed as standard. Please note the grain on the GRP Apeer door does not replicate the grain on the frames as it is a PVC foil. Sidelight and toplight designs will depend on sidelight and toplight final sizes and may vary from design shown. Coloured film in glass designs is not an exact match to the door colour.

Portland

Door APL2, Glass TP1*
Shown in Heather Violet Pink (RAL 4003)



The pink film used in the glass design has a sparkle finish as shown above.

Furniture Shown: Sweet Handle, Sweet Knocker, Sweet Letterplate, Sweet Numeral all shown in Rose Gold. *Glass design shown with Minster backing glass.

Dunluce

Door APA2, Glass BO500*
Shown in Dark Red

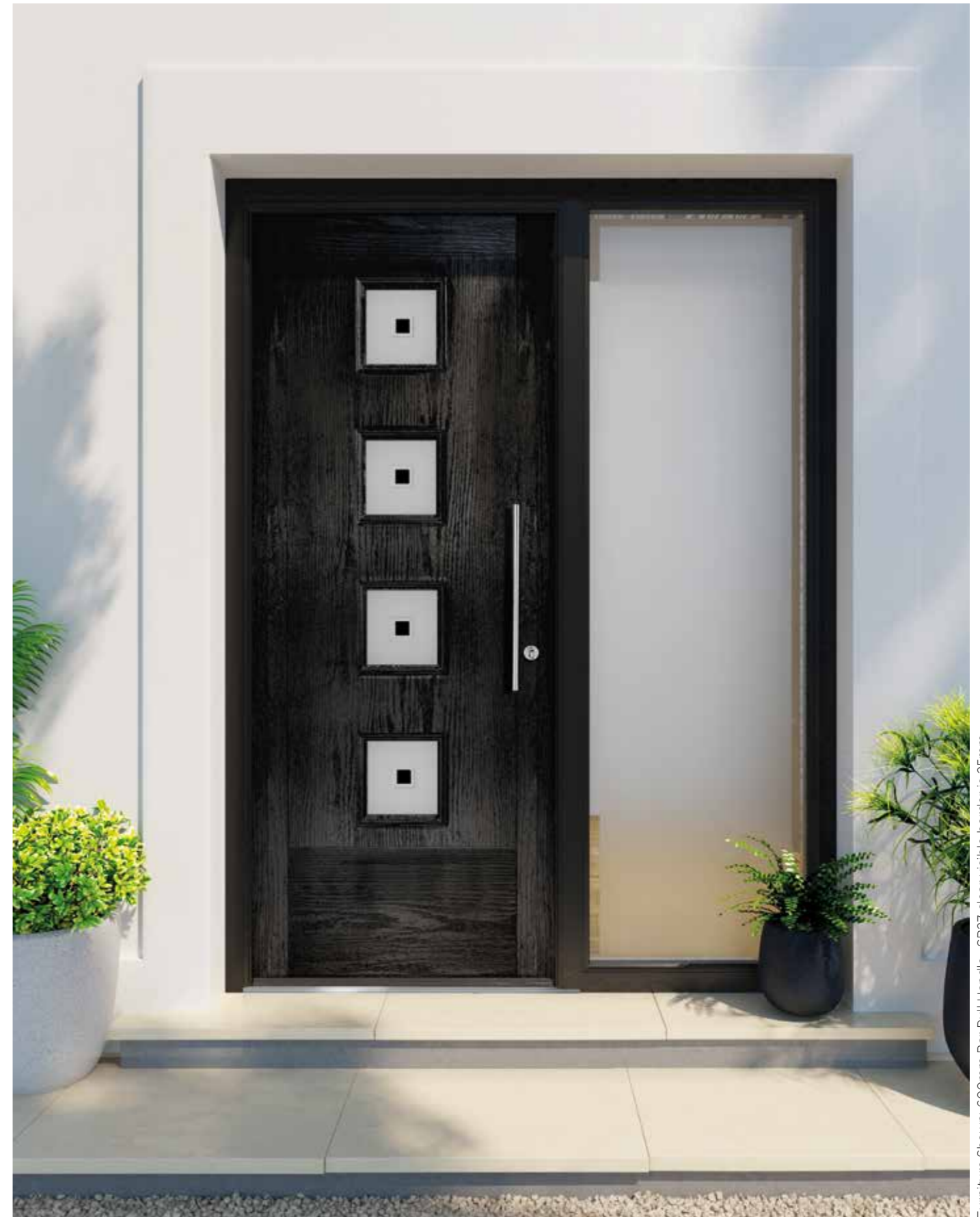


Furniture Shown: Architectural Handle, Architectural Knocker, Architectural Push-in Letterplate all shown in satin silver. *Glass design shown with Minster backing glass.

Every effort has been made to reproduce the colour of our Apeer doors and the coloured film in the decorative glass designs. However, printing constraints will give rise to some colour deviation. All Apeer 70mm doors are triple glazed as standard. Please note the grain on the GRP Apeer door does not replicate the grain on the frames as it is a PVC foil. Sidelight and toplight designs will depend on sidelight and toplight final sizes and may vary from design shown. Coloured film in glass designs is not an exact match to the door colour.

Dunrobin

Door APP4, Glass FT50 on clear glass,
Sidelight Glass SB27, Shown in Black



Furniture Shown: 600mm Bar Pull Handle. SB27 clear visible border is 25mm.

Portland

Door APL2, Glass LF517*
Shown in Rosewood



Furniture Shown: Aspire Handle, Urn Knocker, Architectural Push-in Letterplate all shown in Chrome. *Glass design shown with Minster backing glass.

Every effort has been made to reproduce the colour of our Apeer doors and the coloured film in the decorative glass designs. However, printing constraints will give rise to some colour deviation. All Apeer 70mm doors are triple glazed as standard. Please note the grain on the GRP Apeer door does not replicate the grain on the frames as it is a PVC foil. Sidelight and toplight designs will depend on sidelight and toplight final sizes and may vary from design shown. Coloured film in glass designs is not an exact match to the door colour.

Longthorpe

Perfect as a
back door

Door APG3, shown with Minster glass
Shown in White



Furniture Shown: Chrome Handle.



ACCESSIBLE DOORS

Wider than our standard doors, our accessible range allows ample room for wheelchairs, walking aids and many battery-powered mobility scooters.



Banwell

Available in extra wide up to 1087mm

Door ACDA3, Glass RG18
Shown in Black



Furniture Shown: Stainless Steel Handle, Stainless Steel Urn Knocker, Stainless Steel Letterplate.

Every effort has been made to reproduce the colour of our Apeer doors and the coloured film in the decorative glass designs. However, printing constraints will give rise to some colour deviation. All Apeer 70mm doors are triple glazed as standard. Please note the grain on the GRP Apeer door does not replicate the grain on the frames as it is a PVC foil. Sidelight and toplight designs will depend on sidelight and toplight final sizes and may vary from design shown. Coloured film in glass designs is not an exact match to the door colour.

Matching sidelights are not available for RG glass. There is no choice of backing glass with RG glass. RG glass is only available as shown and cannot be changed by Apeer.

Witton

Door ACDM2, Glass SB121
Shown in Agate Grey



Furniture Shown: Aspire Handle, Doctors Knocker and Architectural Push-in Letterplate all shown in Chrome.

Every effort has been made to reproduce the colour of our Apeer doors and the coloured film in the decorative glass designs. However, printing constraints will give rise to some colour deviation. All Apeer 70mm doors are triple glazed as standard. Please note the grain on the GRP Apeer door does not replicate the grain on the frames as it is a PVC foil. Sidelight and toplight designs will depend on sidelight and toplight final sizes and may vary from design shown. Coloured film in glass designs is not an exact match to the door colour.

Banwell

Available in extra wide
up to 1087mm

Door ACDA3, Glass RG18
Shown in Orchid Pink



Furniture Shown: Aspire Handle, Limited Edition Bumble Bee Knocker, Architectural Push-in Letterplate all shown in Chrome.

Matching sidelights are not available for RG glass. There is no choice of backing glass with RG glass. RG glass is only available as shown and cannot be changed by Apeer.

Witton

Available in extra wide up to 1087mm

Door ACDM2, Glass RG21
Shown in Chartwell Green



Furniture Shown: Forged Black Monkey Tail Handle, Forged Black Bull Ring Knocker, Forged Black Push-in Letterplate, Forged Black Door Pull.

Traditional Door Styles



Dunluce
APA / MOA



Longthorpe (Glass FT31)
APG / MOG



Portland (Glass LF515)
APL / MOL



Chester (Glass FT29)
APC / MOC



Hanwell (Glass B0500)
APY / MOY



Lambton (Glass B07)
APS / MOS



Rowton (Glass LF549)
APM / MOM



Wardour (Glass LF545)
APT / MOT



Dunrobin (Glass FT50)
APP4 / MOP4



Banwell
ACDA



Witton (Clear Glass)
ACDM

Every effort has been made to reproduce the colour of our Apeer doors and the coloured film in the decorative glass designs. However, printing constraints will give rise to some colour deviation. All Apeer 70mm doors are triple glazed as standard. Please note the grain on the GRP Apeer door does not replicate the grain on the frames as it is a PVC foil. Sidelight and toplight designs will depend on sidelight and toplight final sizes and may vary from design shown. Coloured film in glass designs is not an exact match to the door colour.

Matching sidelights are not available for RG glass. There is no choice of backing glass with RG glass. RG glass is only available as shown and cannot be changed by Apeer.



Kirtling APG4 FT48



STABLE DOORS

Perfect for lazy summer days and fresh frosty mornings, stable doors keep pets and children secure while letting air circulate and sunlight stream in. They also add a touch of rustic charm to any home.

- Penhurst
SD0
- Walworth
SD2 RG45
- Otford
SD5 RG51
- Ince
SD36
- Blencow
SD37



Clear with Stippolyte backing glass.

Stippolyte backing glass.

Hanwell Stable

Door APY4, Glass BO500*
Shown in Cream



Furniture Shown: Gold Handle with Escutcheon Plate. *Glass design shown with Minster backing glass.

Every effort has been made to reproduce the colour of our Apeer doors and the coloured film in the decorative glass designs. However, printing constraints will give rise to some colour deviation. All Apeer 70mm doors are triple glazed as standard. Please note the grain on the GRP Apeer door does not replicate the grain on the frames as it is a PVC foil. Glass designs shown in sidelights may vary depending on sidelight width. Coloured film in glass designs is not an exact match to the door colour. Stable doors are not suitable for extremely exposed locations.

Hinge bolts are not available on stable doors.

Hanwell French

Door APY2, Glass BO500*
Shown in Black



FRENCH DOORS

Our double doors make a grand entrance. They not only give the front of your home scale and stature, they feature all the robust safety benefits of our single doors. And with a double rebate and triple glazing as standard, they are equally energy efficient.



Every effort has been made to reproduce the colour of our Apeer doors and the coloured film in the decorative glass designs. However, printing constraints will give rise to some colour deviation. All Apeer 70mm doors are triple glazed as standard. Please note the grain on the GRP Apeer door does not replicate the grain on the frames as it is a PVC foil. Glass designs shown in sidelights may vary depending on sidelight width. Coloured film in glass designs is not an exact match to the door colour. Double doors open inward only.

Hinge bolts are not available on French doors.

French doors are not available in styles; APTS26, APTS29 and APTS21.

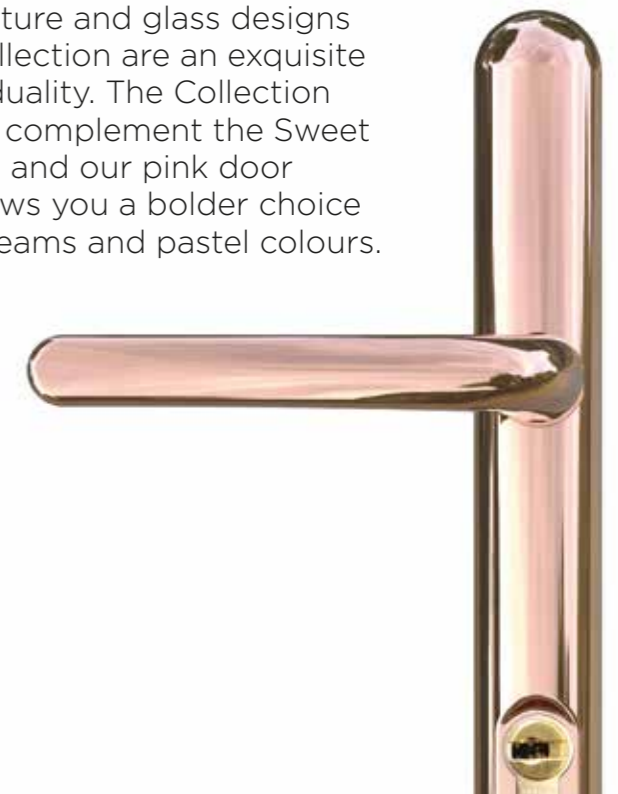
Furniture Shown: Chrome Handles. *Glass design shown with Minster backing glass.

Furniture Shown: Sweet Handle, Sweet Knocker, Sweet Letterplate all shown in Rose Gold. *Glass design shown with Minster backing glass.



ROSE GOLD COLLECTION

Distinctively different and fabulously on-trend, the door furniture and glass designs in our Rose Gold Collection are an exquisite expression of individuality. The Collection has been created to complement the Sweet door furniture range and our pink door shades, but also allows you a bolder choice when paired with creams and pastel colours.



Rowton APM2*
Glass GR1
Shown in Light Pink (RAL 3015)

Every effort has been made to reproduce the colour of our Apeer doors and the coloured film in the decorative glass designs. However, printing constraints will give rise to some colour deviation. Please note the grain on the GRP Apeer door does not replicate the grain on the frame as it is a PVC foil. Glass designs shown in sidelights may vary depending on sidelight width. Coloured film in glass designs is not an exact match to the door colour. Sidelights and toplights for TP glass designs are only available as triple glazed units. Rose Gold designs shown with Antique grey lead.

The glass has been designed by our inhouse glass designers specifically for this collection and any imprints on the film are a natural part of the handcrafted process.



ROSE GOLD GLASS
DESIGN ACCENTS

Our designers have created a beautiful collection of window accent tints to complement our Rose Gold Collection door furniture. Available in traditional or avant-garde shape and bevel combinations, the accent tints also come in a flat matt or mirrored chrome finish.



Portland APL2
Glass GR2*
Shown in
Antique Pink
(RAL 3014)



Every effort has been made to reproduce the colour of our Apeer doors and the coloured film in the decorative glass designs. However, printing constraints will give rise to some colour deviation. Please note the grain on the GRP Apeer door does not replicate the grain on the frame as it is a PVC foil. Glass designs shown in sidelights may vary depending on sidelight width. Coloured film in glass designs is not an exact match to the door colour. Sidelights and toplights for TP glass designs are only available as triple glazed units.

The glass has been designed by our inhouse glass designers specifically for this collection and any imprints on the film are a natural part of the handcrafted process.



CONTEMPORARY COLLECTION

Clean, fresh lines and polished angular details make our Contemporary collection perfect for cutting edge homes and forward-thinking owners.

Mawes

Door APTS2, Glass BO500*
Shown in Black



Furniture Shown: Aspire Handle shown in Chrome. *Glass design shown with Minster backing glass.

Every effort has been made to reproduce the colour of our Apeer doors and the coloured film in the decorative glass designs. However, printing constraints will give rise to some colour deviation. All Apeer 70mm doors are triple glazed as standard. Please note the grain on the GRP Apeer door does not replicate the grain on the frames as it is a PVC foil. Glass designs shown in sidelights may vary depending on sidelight width. Coloured film in glass designs is not an exact match to the door colour.

Mortham

Door APTS0, Sidelight Glass SB120*
Shown in Telemagenta (RAL 4010)



Furniture Shown: 1200mm Bar Pull Handle. *Sandblast design with glass bevel.

Birr

Door APTS33, Glass TP4*
Shown in Antique Pink (RAL 3014)



Furniture Shown: Sweet Handle shown in Rose Gold. *Rose gold film design with pearlescent bevels, glass design shown with Minster backing glass. Letterbox not available on this door style.

Every effort has been made to reproduce the colour of our Apeer doors and the coloured film in the decorative glass designs. However, printing constraints will give rise to some colour deviation. All Apeer 70mm doors are triple glazed as standard. Please note the grain on the GRP Apeer door does not replicate the grain on the frames as it is a PVC foil. Glass designs shown in sidelights may vary depending on sidelight width. Coloured film in glass designs is not an exact match to the door colour. The glass has been designed by our inhouse glass designers specifically for this collection and any imprints on the film are a natural part of the handcrafted process.

Compton

Door APTS26, Glass RG54,
Sidelight Glass SB27, Shown in Light Grey



Furniture Shown: 1200mm Bar Pull Handle. SB27 clear visible border is 25mm. Letterbox not available on this door style.

Matching sidelights are not available for RG glass. There is no choice of backing glass with RG glass. RG glass is only available as shown and cannot be changed by Apeer.

Mortham

Door APTS0, Sidelight Glass SB27
Shown in Anthracite Grey

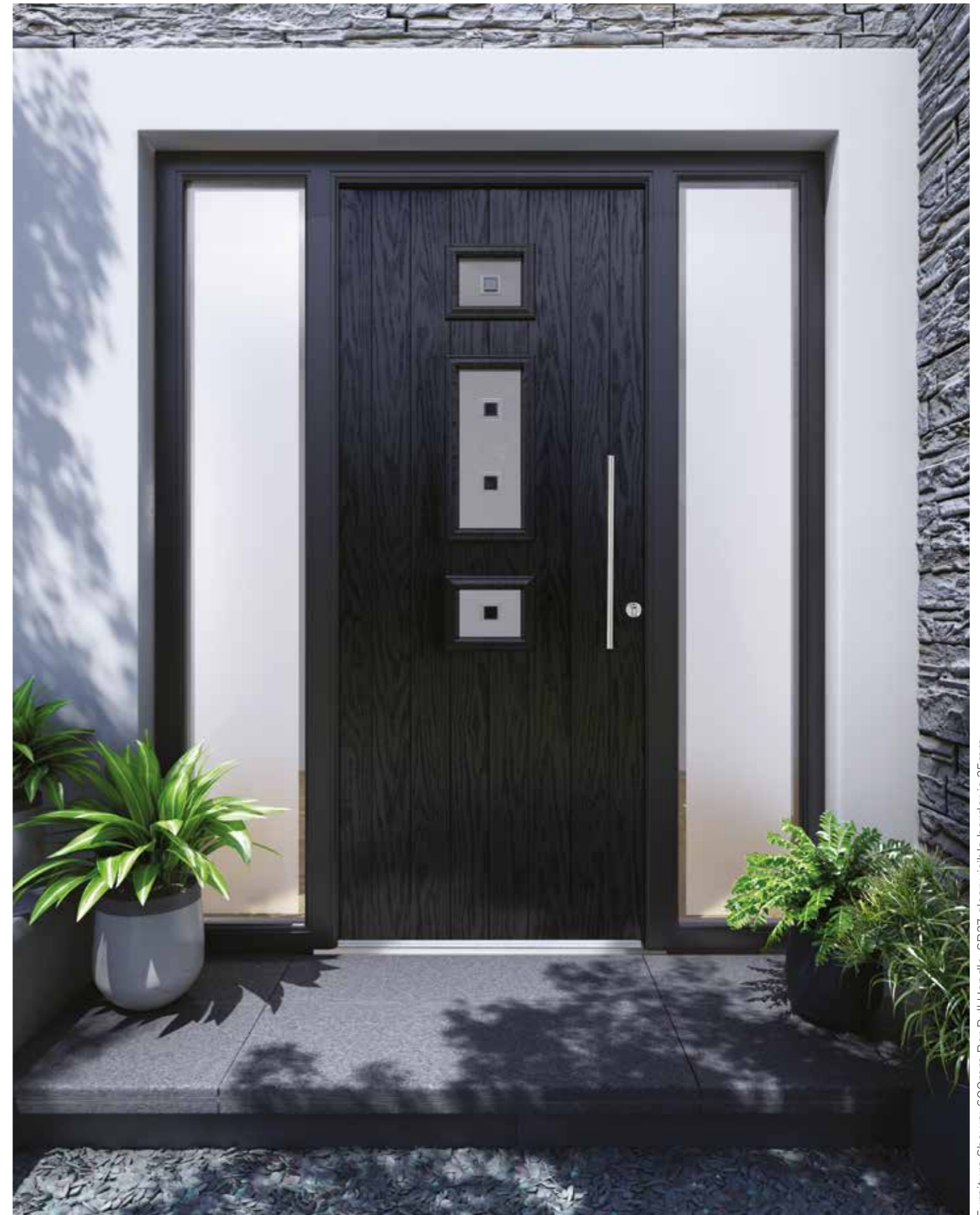


Furniture Shown: Aspire Handle shown in Chrome. SB27 clear visible border is 25mm.

Every effort has been made to reproduce the colour of our Apeer doors and the coloured film in the decorative glass designs. However, printing constraints will give rise to some colour deviation. All Apeer 70mm doors are triple glazed as standard. Please note the grain on the GRP Apeer door does not replicate the grain on the frames as it is a PVC foil. Glass designs shown in sidelights may vary depending on sidelight width. Coloured film in glass designs is not an exact match to the door colour.

Dalston

Door APTS12, Glass FT50,
Sidelight Glass SB27, Shown in Black



Furniture Shown: 600mm Bar Pull Handle. SB27 clear visible border is 25mm.

Birr

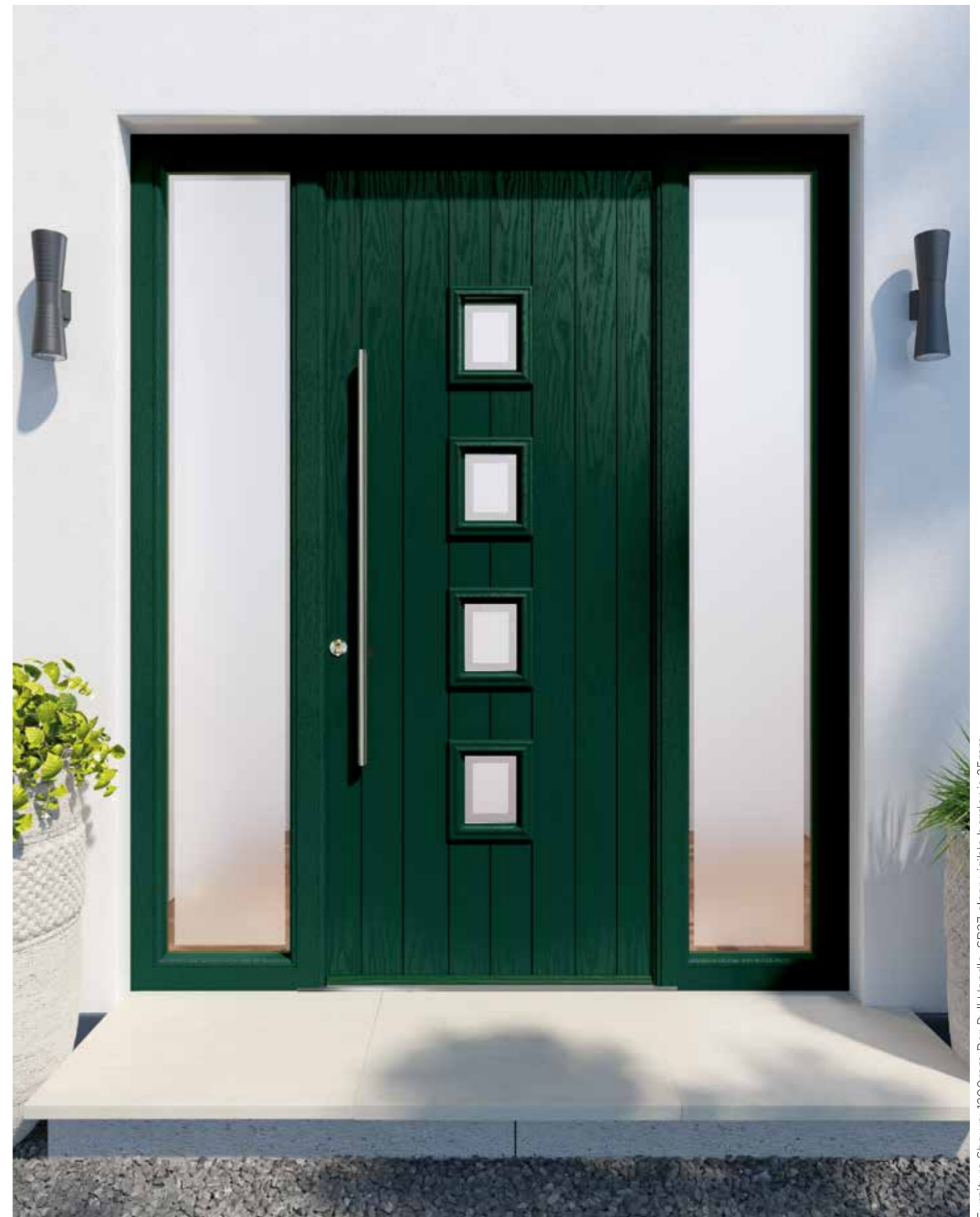
Door APTS33, Glass SB27
Shown in Anthracite Grey



Furniture Shown: Karcher Handle shown in Stainless Steel. SB27 clear visible border is 25mm. Letterbox not available on this door style.

Beetham

Door APTS6, Glass SB27
Shown in Dark Green



Furniture Shown: 1200mm Bar Pull Handle. SB27 clear visible border is 25mm.

Every effort has been made to reproduce the colour of our Apeer doors and the coloured film in the decorative glass designs. However, printing constraints will give rise to some colour deviation. All Apeer 70mm doors are triple glazed as standard. Please note the grain on the GRP Apeer door does not replicate the grain on the frames as it is a PVC foil. Glass designs shown in sidelights may vary depending on sidelight width. Coloured film in glass designs is not an exact match to the door colour.

Birr

Door APTS33, Glass SB27
Shown in Anthracite Grey



Furniture Shown: 1200mm Bar Pull Handle, SB27 clear visible border is 25mm. Letterbox not available on this door style.

Every effort has been made to reproduce the colour of our Apeer doors and the coloured film in the decorative glass designs. However, printing constraints will give rise to some colour deviation. All Apeer 70mm doors are triple glazed as standard. Please note the grain on the GRP Apeer door does not replicate the grain on the frames as it is a PVC foil. Glass designs shown in sidelights may vary depending on sidelight width. Coloured film in glass designs is not an exact match to the door colour.

Fraser

Door APTS16, Glass RG21,
Sidelight Glass SB27, Shown in White



Furniture Shown: 600mm Bar Pull Handle, SB27 clear visible border is 25mm.

Matching sidelights are not available for RG glass. There is no choice of backing glass with RG glass. RG glass is only available as shown and cannot be changed by Apeer.

Bickleigh

Door APTS25, Glass SB27
Shown in Light Grey



Furniture Shown: Karcher Handle shown in Stainless Steel. SB27 clear visible border is 25mm.

Every effort has been made to reproduce the colour of our Apeer doors and the coloured film in the decorative glass designs. However, printing constraints will give rise to some colour deviation. All Apeer 70mm doors are triple glazed as standard. Please note the grain on the GRP Apeer door does not replicate the grain on the frames as it is a PVC foil. Glass designs shown in sidelights may vary depending on sidelight width. Coloured film in glass designs is not an exact match to the door colour.

Contemporary Door Styles

							
Mortham APTS0	Mawes (Glass RG46) APTS2	Kenmure (Glass SB27) APTS4	Allington (Glass FT45) APTS5	Beetham (Glass RG18) APTS6	Bewley (Glass SB16) APTS10	Clifton (Glass SB20) APTS11	Dalston (Glass SB27) APTS12
							
Brodie (Glass SB18) APTS13	Fraser (Glass RG21) APTS16	Bamburgh (Clear Glass) APTS17	Norris (Glass SB27) APTS18	Howgill (Glass RG17) APTS19	Kingsgate (Glass RG1) APTS20	Linstock (Glass Dia. Lead) APTS21	Wharton (Glass RG62) APTS22
							
Haddon (Glass SB26) APTS23	Wingfield (Glass FT55) APTS24	Bickleigh (Glass RG23) APTS25	Compton (Glass RG53) APTS26	Lyndford (Glass RG20) APTS28	Lulworth (Glass RG56) APTS29	Harewood (Glass RG34) APTS30	Walden (Glass SB26) APTS31
							
Clifden (Glass RG23) APTS32	Birr (Glass SB26) APTS33	Leslie (Glass SB27) APTS34	Calshot (Glass FT43) APTS35	Netley (Glass FT82) APTS36	Croft (Glass FT81) APTS37		

Matching sidelights are not available for RG glass. There is no choice of backing glass with RG glass. RG glass is only available as shown and cannot be changed by Apeer.



SILKA COLLECTION

Our designers have created a sleek and effortlessly luxurious range that makes a stylish statement. The surface of Silka has a unique, smooth texture that sets the range apart from any other.

Wilton

Door SFG7 - Glass Trim, Glass SB27
Shown in Black with Lines



Furniture Shown: 1200mm Bar Pull Handle. SB27 clear visible border is 25mm.

Every effort has been made to reproduce the colour of our Apeer doors and the coloured film in the decorative glass designs. However, printing constraints will give rise to some colour deviation. All Apeer 70mm doors are triple glazed as standard. Glass designs shown in sidelights may vary depending on sidelight width. Coloured film in glass designs is not an exact match to the door colour.

Wilton

Door SFG7 - Glass Trim, Glass SB27
Shown in Anthracite Grey



Furniture Shown: 1200mm Bar Pull Handle. SB27 clear visible border is 25mm.



WAIST HIGH LOCK SYSTEM

Shown (left) with round escutcheon plate and 1200mm bar pull handle.

INTERNAL GLAZING FINISH

All-glass glazing trims are finished with stainless steel trims on the inside.



CONTEMPORARY FRAME

The Silka Collection is manufactured with a chamfered frame.



HINGE OPTIONS

All Silka doors are available with a choice of two hinges:

Flag Hinges

Butt Hinges



WAIST HIGH LOCK SYSTEM

Shown (right) with round escutcheon plate and Karcher lever handle.



HANDLE OPTIONS

You can mix and match your handle choices meaning that you can have a different handle on the outside and inside of your door.

External view: Anthracite Grey shown with round escutcheon plate and 1200mm bar handle on the outside.

Internal view: Light Grey shown with round escutcheon plate and Karcher lever handle.



External View



FINGER PULL HANDLE

Finger pull handle and round escutcheon plate (thumbturn available).



Internal View

Every effort has been made to reproduce the colour of our Apeer doors and the coloured film in the decorative glass designs. However, printing constraints will give rise to some colour deviation. All Apeer 70mm doors are triple glazed as standard. Glass designs shown in sidelights may vary depending on sidelight width. Coloured film in glass designs is not an exact match to the door colour.

Please note 'Tea staining' on stainless steel components is common and is caused by the oxidation of surface contaminants on stainless steel. It is not an indication of quality and does not affect the structural integrity or the longevity of the material and periodic cleaning of the stainless steel trims will reduce the likelihood of tea staining.

SILKA COLOUR RANGE

The Silka finish suits specific colours, highlighted below.



DOOR FRAME COLOURS

Silka door frames are available in:

Anthracite grey (outside and inside),

Black (outside and inside),

White (inside only)

Light grey (inside only)

Silka Door Styles

(All shown with Glass design SB27. SB27 clear visible border is 25mm)



Every effort has been made to reproduce the colour of our Apeer doors and the coloured film in the decorative glass designs. However, printing constraints will give rise to some colour deviation. All Apeer 70mm doors are triple glazed as standard. Glass designs shown in sidelights may vary depending on sidelight width. Coloured film in glass designs is not an exact match to the door colour.

Please note 'Tea staining' on stainless steel components is common and is caused by the oxidisation of surface contaminants on stainless steel. It is not an indication of quality and does not affect the structural integrity or the longevity of the material and periodic cleaning of the stainless steel trims will reduce the likelihood of tea staining.



MODO COLLECTION

The very latest international design trends influence our cutting edge Modo Collection.

Somerton

Door AMD2, Glass ST61, Sidelight Glass SB27
Shown in Anthracite Grey



Furniture Shown: 1200mm Bar Pull Handle, SB27 clear visible border is 25mm.

Every effort has been made to reproduce the colour of our Apeer doors and the coloured film in the decorative glass designs. However, printing constraints will give rise to some colour deviation. All Apeer 70mm doors are triple glazed as standard. Please note the grain on the GRP Apeer door does not replicate the grain on the frames as it is a PVC foil. Glass designs shown in sidelights may vary depending on sidelight width. Coloured film in glass designs is not an exact match to the door colour.

Elsdon

Door AMD5, Glass SR30, Sidelight Glass SB27
Shown in Anthracite Grey



Furniture Shown: Karcher Handle shown in Stainless Steel, SB27 clear visible border is 25mm.

Please note 'Tea staining' on stainless steel components is common and is caused by the oxidation of surface contaminants on stainless steel. It is not an indication of quality and does not affect the structural integrity or the longevity of the material and periodic cleaning of the stainless steel trims will reduce the likelihood of tea staining.



Modo Door Styles



Kylemore (Glass FT90)
AMD1



Somerton (Glass ST61)
AMD2



Astwell (Glass SB40)
AMD3



Dilston (Glass FT66)
AMD4



Elsdon (Glass SR30)
AMD5



Danby (Glass SB35)
AMD6



Howard (Glass FT70)
AMD7



Crom (Glass FT72)
AMD8



Oakham (Glass ST61)
AMD9



Skipsea (Glass FT66)
AMD10



Cashel (Glass FT66)
AMD11



Lismore (Glass FT66)
AMD12



Halton (Glass SB26)
AMD20



Gosford (Glass SB26)
AMD21

All Modo doors excluding Double doors are available with lever handles or contemporary handles. Double doors are only available with lever handles. Please note 'Tea staining' on stainless steel components is common and is caused by the oxidation of surface contaminants on stainless steel. It does not affect the structural integrity or the longevity of the material and regular cleaning of the stainless steel trims will reduce the likelihood of tea staining.

Please note 'Tea staining' on stainless steel components is common and is caused by the oxidation of surface contaminants on stainless steel. It is not an indication of quality and does not affect the structural integrity or the longevity of the material and periodic cleaning of the stainless steel trims will reduce the likelihood of tea staining.

Sidelight Glass SB27
Shown in Black

COLORO COLLECTION

Glossy. Glassy. Classy.
Our Coloro Collection offers
polished performance.



Every effort has been made to reproduce the colour of our Apeer doors and the coloured film in the decorative glass designs. However, printing constraints will give rise to some colour deviation. All Apeer 70mm doors are triple glazed as standard. Glass designs shown in sidelights may vary depending on sidelight width. Coloured film in glass designs is not an exact match to the door colour.

Furniture Shown: 1200mm Bar Pull Handle



ACCESSORIES

Designed with care and crafted to last, our accessories have been created to complement our door collections. From traditional rustic metalwork to high-end polished chrome, you don't have to look further than the next few pages to complete your Apeer door.

PREMIUM Aspire Door Furniture

Aspire Handle and Letterplate are available in 2 colours: Chrome & Satin Silver. Doctors Knocker only available in Chrome.

Door Handle with Escutcheon Plate Shown in Chrome



See page 32

The Aspire furniture range is perfectly complemented by the Architectural Push-in Letterplate shown below in Chrome



Doctors Knocker only available in Chrome as shown



PREMIUM Architectural Door Furniture

Architectural Door Furniture
is available in 2 colours:
Chrome & Satin Silver

Door Handle shown in Chrome



See page 42

Door Knocker and Push-in Letterplate
both shown in Chrome



PREMIUM Heritage Door Furniture

Our Heritage range has been
designed with curved corners
on the handle and letterplate
to suit a more traditional style.

Heritage Door Furniture is available in
2 colours: Chrome & Satin Silver

Bull Ring Knocker
Shown in Satin Silver



See page 33



Push-in Letterplate
Shown in Chrome

Door Pull
Shown in Satin Silver

Door Handle
Shown in Chrome

PREMIUM Sweet Door Furniture

Sweet Door Furniture is available in 5 colours: Rose Gold, Chrome, Black, Satin Silver and Gold.

Door Knocker shown in Rose Gold



See page 56

Letterplate and Numeral shown in Rose Gold



Door Handle shown in Rose Gold



PREMIUM Forged Black Door Furniture

Monkey Tail Door Handle



See page 34

PREMIUM Pewter Door Furniture

Noble Door Handle and Push-in Letterplate



See page 36



Monkey Tail Handle



Noble Handle



Regal Handle



Bull Ring Knocker



Spire Knocker



Monkey Tail Handle



Noble Handle



Regal Handle



Bull Ring Knocker



Spire Knocker



Push-in Letterplate



Door Pull



Push-in Letterplate



Door Pull

PREMIUM
Stainless Steel
Door Furniture

Our stainless-steel door furniture is particularly suited to coastal areas with higher salt content in the air. Corrosion-resistant, just like the doors themselves, means minimal upkeep and maximum visual impact.

Door Handle shown in Stainless Steel



Door Knocker and Letterplate both shown in Stainless Steel



PREMIUM
Limited Edition
Door Knockers

Add a touch of character to your door entrance. Each knocker has been handcrafted and finished using high quality materials. So if you're looking for something truly unique, this collection suits all styles and tastes.

Our Bumble Bee and Dragonfly Knockers are only available in Chrome and can only be fitted to certain door styles which are: APA1, APA2, APA3, APC1, APC2, APY1, APY2, APTS0, APTS2, ACDA1, ACDA2, and ACDA3.



See page 39

Bumble Bee Knocker
Shown in Chrome



Dragonfly Knocker
Shown in Chrome

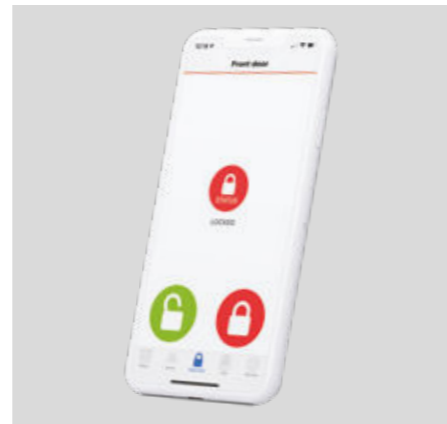


Ultion Accessibility Smart Lock

Our new, highly secure, automatic lock is operated easily from your phone and from a wall mounted keypad. You can set to lock and unlock at the touch of a button. It's even compatible with Apple Siri and Amazon Alexa.

For more details visit:
www.ultion.co.uk/review/apeer

Available in colours: Black,
Rose Gold, Chrome & Gold.



The Ultion Smart Lock is available with the Aspire Door Handle on the inside and outside of the door.



Contemporary Door Handles

We offer modern, stainless steel handles to give our Contemporary, Silka and Modò ranges a super-sleek look.



1800mm
Bar Handle

1200mm
Bar Handle

600mm
Bar Handle



Waist high lock system with round escutcheon plate and Karcher lever handle.



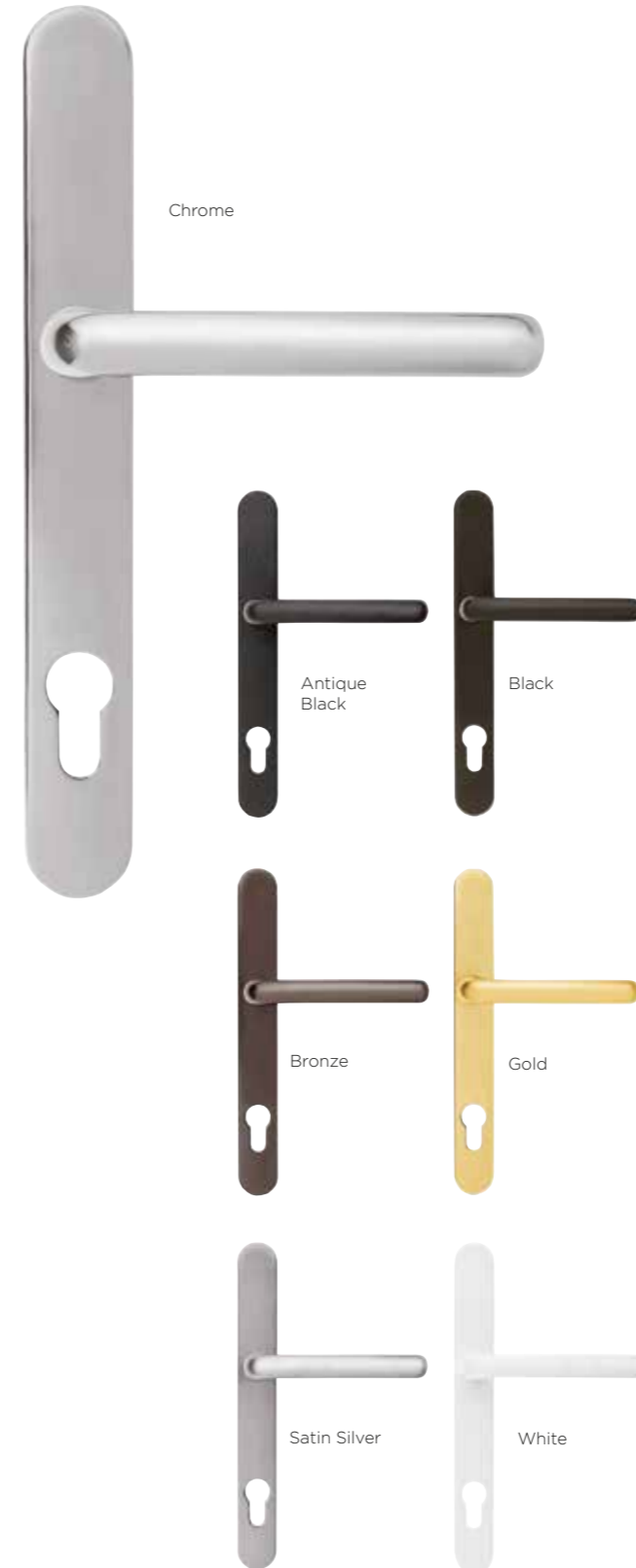
Karcher handle with escutcheon shown on inside.

Door Furniture Handles

The solid feel and robust quality of our door furniture reflects the build of the doors themselves. Each piece is covered by a four-year surface finish guarantee.



Classic Lever Handles
(also available with split handle)



Classic Lever Pad Handles
(with split handle)



Door Furniture Knockers

Contemporary Knocker



Chrome

Scroll Knocker



Chrome

Slimline Knocker



Chrome

Urn Knocker
Also available with spyhole



Chrome

Lionshead Knocker



Chrome



Antique Black Black Bronze



Antique Black Black Bronze



Antique Black Black Bronze



Antique Black Black Bronze



Antique Black Black Bronze



Gold Satin Silver White



Gold Satin Silver White



Gold Satin Silver White



Gold Satin Silver White



Gold Satin Silver White

Door Furniture Letterplates and Accessories

Letterplates



Chrome



Antique Black



Gold



Black



Satin Silver



Bronze



White

Escutcheon Plate
Shown in stainless steel.
Also available in brass.



Finger Pull
Shown in stainless steel.
Also available in brass.



Apeer 70mm Door Flag Hinge
Apeer 70mm doors are fitted with flag hinges. Colour options available. Butt hinges also available in white, gold, chrome and brown



Security Chain



Gold



Chrome

Numerals

Available in:
Antique Black
Black
Bronze
Chrome
Gold
Satin Silver
White



Spyholes



Gold



Chrome



Black

Apeer 44mm Door Butt Hinge

Apeer44 doors are fitted with butt hinges. Colour options available.

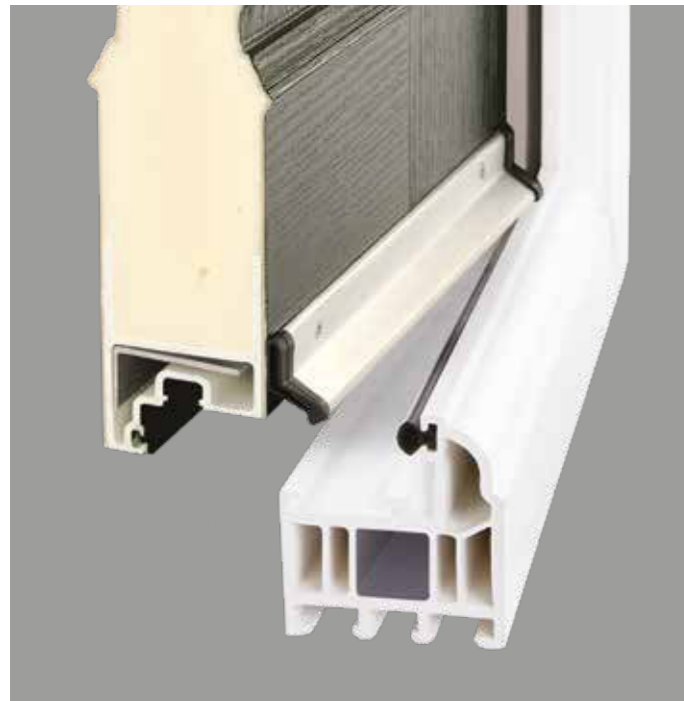


THRESHOLD OPTIONS

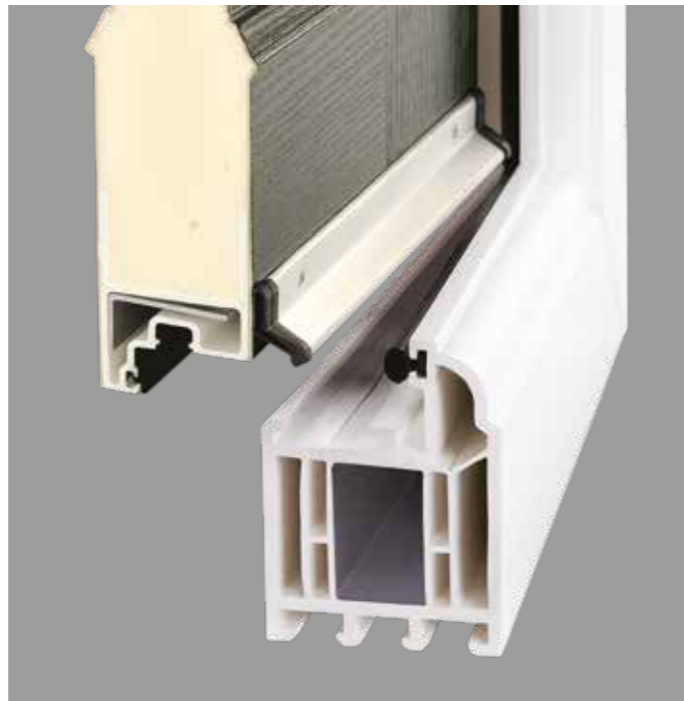


MDS70 Threshold (25mm) Shown with ramp
Distance from bottom of door leaf to bottom of threshold 18mm

uPVC Low Frame Threshold
Distance from bottom of door leaf to bottom of threshold 27mm

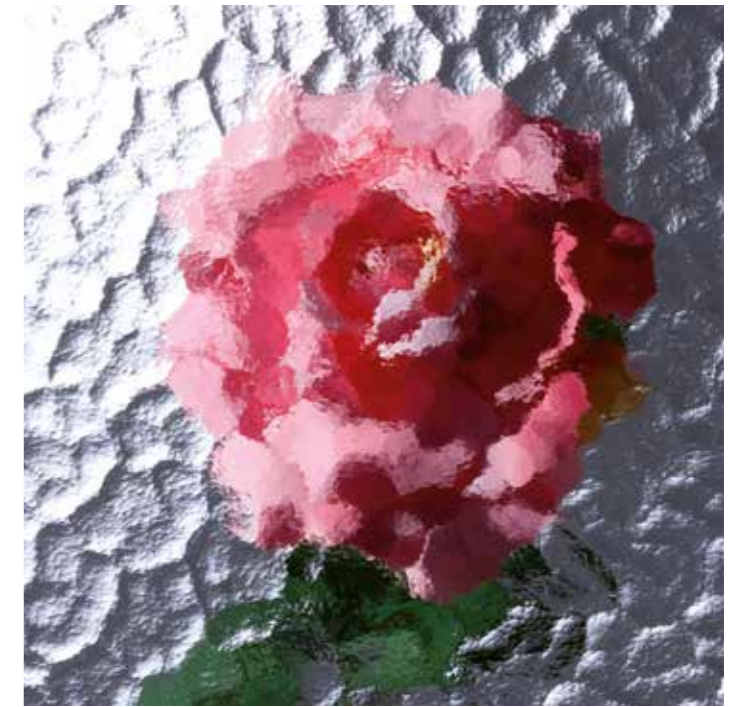


uPVC Full Frame Threshold
Distance from bottom of door leaf to bottom of threshold 43mm



BACKING GLASS OPTIONS

All of the door designs (except RG glass codes) featured throughout the brochure can be backed with a range of obscure glass to suit all requirements for energy efficiency, safety and privacy. This is our standard range but we can offer more styles upon request. Please note there may be an additional charge for non standard obscure glass patterns. There is no choice of backing glass for any of the RG glass code designs shown.



Minster



Flemish



Stippolyte



Cotswold



Contour



Satin

MODO DOORS



MODO FRAMES

Now with a choice of chamfered or sculptured frames.

Chamfered frame colours are limited to Black, Anthracite grey, Light grey, Cream or White.

AMD20 & AMD21 are not available in White.

Handle options for MODO doors with a chamfered frame are the same waist high options as Silka.



Chamfered Frame



Sculptured Frame

SILKA DOORS

(All shown with Glass design SB27. SB27 clear visible border is 25mm)



SILKA COLOURS COMBINATIONS

<p>1 Outside: Anthracite Grey</p> <p>Inside: Anthracite Grey Anthracite Grey with Lines Light Grey Halo White</p>	<p>2 Outside: Anthracite Grey with Lines</p> <p>Inside: Anthracite Grey Anthracite Grey with Lines Light Grey Halo White</p>	<p>3 Outside: Black</p> <p>Inside: Black Black with Lines Light Grey Halo White</p>	<p>4 Outside: Black with Lines</p> <p>Inside: Black Black with Lines Light Grey Halo White</p>
---	--	---	--

All MODO doors excluding Double doors are available with lever handles or contemporary handles. Double doors are only available with lever handles. Please note 'Tea staining' on stainless steel components is common and is caused by the oxidation of surface contaminants on stainless steel. It is not an indication of quality and does not affect the structural integrity or the longevity of the material and periodic cleaning of the stainless steel trims will reduce the likelihood of tea staining.

Whilst care is taken to ensure that this brochure is as up-to-date and accurate as possible, no responsibility can be taken by New World for any errors or omissions contained herein. All measurements must be verified by surveyor on site.

TRADITIONAL DOORS

Available in Apeer 70mm double rebate (AP) and Apeer 44mm single rebate (MO).

The Traditional Collection door styles are available as solid doors with no glass.



Dunluce
APA / MOA

Longthorpe
(Glass FT31)
APG / MOG

Portland
(Glass LF515)
APL / MOL

Chester
(Glass FT29)
APC / MOC

Wardour
(Glass LF545)
APT / MOT

Hanwell
(Glass BO500)
APY / MOY

Lambton
(Glass B07)
APS / MOS



Rowton
(Glass LF549)
APM / MOM

Dunrobin
(Glass FT50)
APP4 / MOP4

Banwell
ACDA1

Witton
(Clear Glass)
ACDM2

CONTEMPORARY DOORS

Only available as Apeer 70mm double rebate.



Mortham
APTS0

Mawes
(Glass RG46)
APTS2

Kenmure
(Glass SB27)
APTS4

Allington
(Glass FT45)
APTS5

Beetham
(Glass RG18)
APTS6

Bewley
(Glass SB16)
APTS10

Clifton
(Glass SB20)
APTS11



Dalston
(Glass SB27)
APTS12

Brodie
(Glass SB18)
APTS13

Fraser
(Glass RG21)
APTS16

Norris
(Glass SB27)
APTS18

Howgill
(Glass RG17)
APTS19

Kingsgate
(Glass RG1)
APTS20

Linstock
(Glass Dia. Lead)
APTS21



Wharton
(Glass RG62)
APTS22

Haddon
(Glass SB26)
APTS23

Wingfield
(Glass FT55)
APTS24

Bickleigh
(Glass RG23)
APTS25

Compton
(Glass RG53)
APTS26

Lyndford
(Glass RG20)
APTS28

Lulworth
(Glass RG56)
APTS29



Walden
(Glass SB26)
APTS31

Clifden
(Glass RG23)
APTS32

Birr
(Glass SB26)
APTS33

Leslie
(Glass SB27)
APTS34

Calshot
(Glass FT43)
APTS35

Netley
(Glass FT82)
APTS36

Croft
(Glass FT81)
APTS37



Build your dream door

...and see it on your own house!

Check out our online door builder at apeer.co.uk/doorbuilder



#morethanadoor



New World
 Woodside Industrial Estate
 Woodside Road
 Ballymena, Co. Antrim
 Northern Ireland BT42 4HX

T: 0345 672 9333
 sales@apeer.co.uk
 T: 048 2563 2200 (ROI)

apeer.co.uk

Apeer is a registered brand of New World Developments Ltd. New World reserves the right to make alterations to any of the featured products without prior notice. January 2022